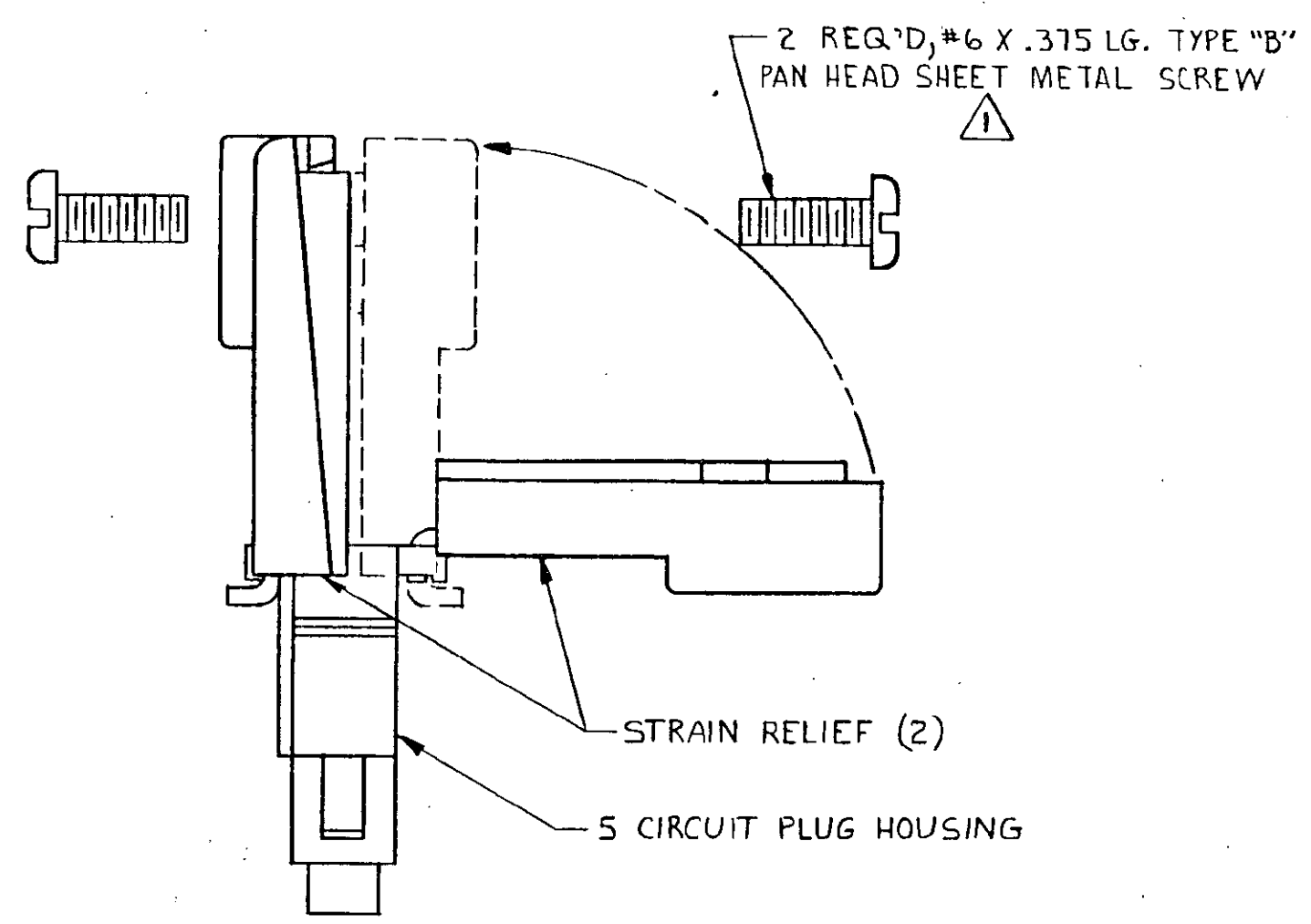
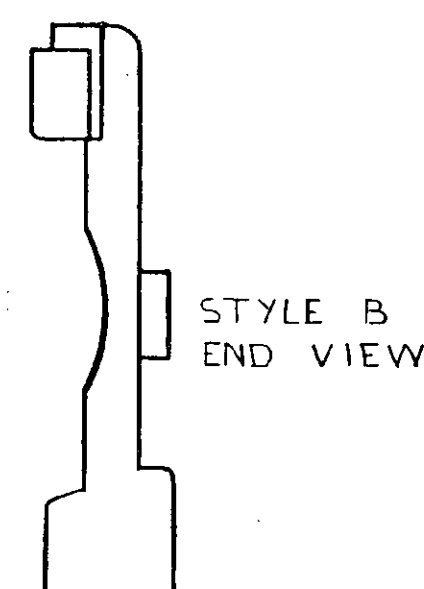
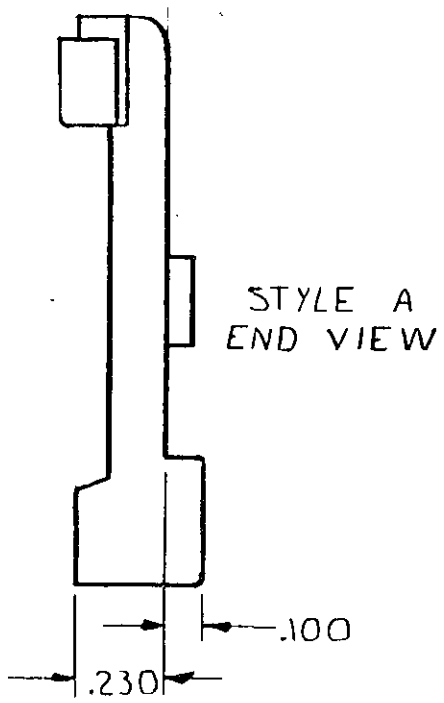
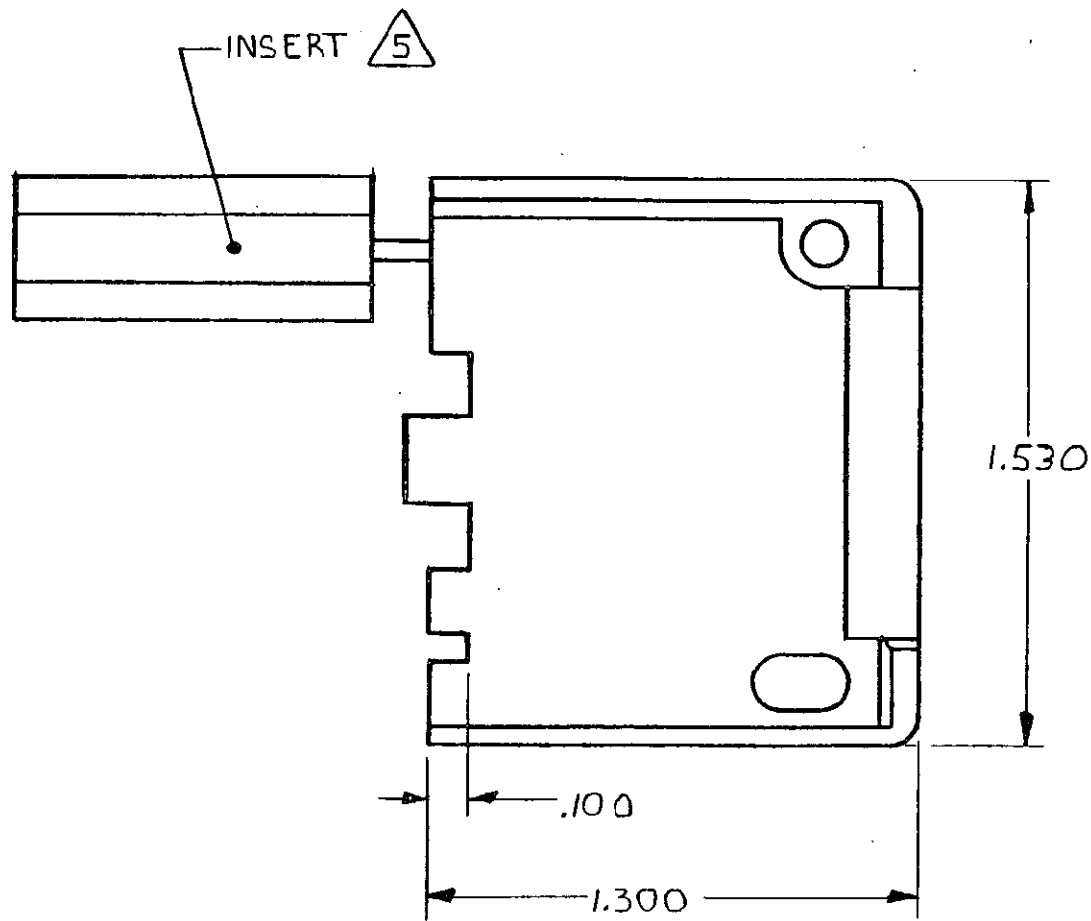
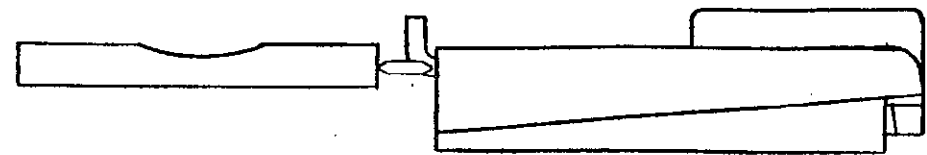


THIS DRAWING IS UNPUBLISHED. RELEASED FOR PUBLICATION, 19  
 © COPYRIGHT 19 BY AMP INCORPORATED, HARRISBURG, PA. ALL INTERNATIONAL RIGHTS RESERVED. AMP PRODUCTS MAY BE COVERED BY U.S. AND FOREIGN PATENTS AND/OR PATENTS PENDING.

| REVISIONS |   |      |                |                            |         |          |
|-----------|---|------|----------------|----------------------------|---------|----------|
| P         | F | ZONE | LTR            | DESCRIPTION                | DATE    | APPROVED |
| ✓         |   |      | 0              | RELEASE DRAWING PER M-6939 | 5-11-82 | MSF/DH   |
| ✓         |   |      | A              | Added 643030-4, TTI B2-164 | 1/22/83 | WV/DH    |
| ✓         |   |      | A <sub>1</sub> | <b>RESTORED</b>            | 7/11/85 | BD RS    |
| ✓         |   |      | B              | REV PER ECN CM 705         | 12/1/86 | TB / RS  |
| ✓         |   |      | C              | REV PER EC 0730-0201-94    | 4-26-85 | JM RS    |



ASSEMBLY DETAILS

- ⚠ SHEET METALS SCREWS NOT SUPPLIED. TWO REQUIRED PER CONNECTOR.
- 3. STYLE A; MAX WIRE BUNDLE WITHOUT INSERT IS 5 AT .190 DIA, AND MIN WIRE BUNDLE WITH INSERT IS 5 AT .040 DIA.
- 4. STYLE B; DESIGNED TO ACCEPT CABLE WITH .200-.350 OUTSIDE DIAMETER.
- 6. DETACHABLE INSERT MAY SEPARATE FROM STRAIN RELIEF BODY DURING SHIPPING.

| NO INSERT   | BRICK RED OR WHITE | NYLON 94V-0 | STYLE B  | 643030-4/2 |
|-------------|--------------------|-------------|----------|------------|
| WITH INSERT | NATURAL            | NYLON 94V-2 | STYLE A  | 643030-3/2 |
| NO INSERT   |                    |             | STYLE B  | 643030-2/2 |
| WITH INSERT | BRICK RED OR WHITE | NYLON 94V-0 | STYLE A  | 643030-1/2 |
|             | 5                  | COLOR       | MATERIAL | TYPE       |
|             |                    |             |          | PART NO    |

|  |                                |               |  |                          |
|--|--------------------------------|---------------|--|--------------------------|
| UNLESS OTHERWISE SPECIFIED DIMENSIONS ARE IN INCHES.<br>TOLERANCES ON:<br>DECIMALS ±.015<br>ANGLES ± | CONTRACT NO                    |               | <b>AMP</b>   AMP INCORPORATED<br>Harrisburg, Pa. 17105             |                          |
|  | DR <i>M. Feker 5-11-82</i>     |               |  |                          |
| MATERIAL<br>SEE TABLE  | CHK <i>D.S. Heide 6/1/82</i>   |               | NAME STRAIN RELIEF AND INSERT,<br>UNIVERSAL MATE-N-LOK™, 5 CIRCUIT |                          |
|  | APPD <i>G.E. Acella 6/1/82</i> |               |  |                          |
|  | DSGN APPD                      | SIZE <b>C</b> | FSCM NO <b>00779</b>   | DRAWING NO <b>643030</b> |
|  | OTHER APPD                     | SCALE 2-1     | SHEET 1 OF 1   |                          |